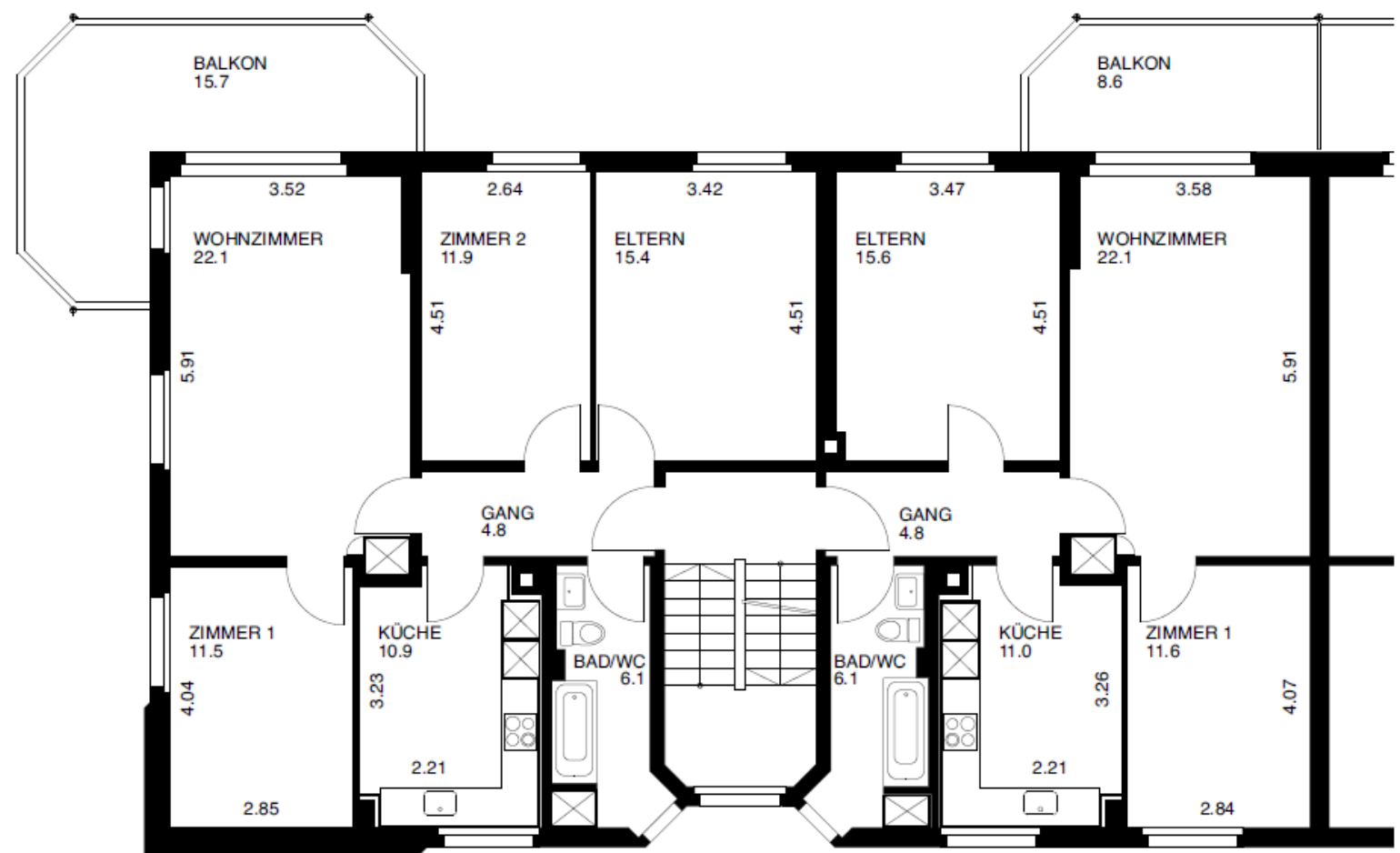
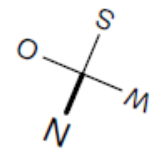
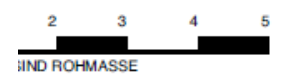


ENSTRASSE 6



4-ZIMMERWOHNUNG

WOHNUNGSNUMMER 118
WOHNFLÄCHE NETTO 82.7 m²
BALKON 15.7 m²

3-ZIMMERWOHNUNG

WOHNUNGSNUMMER 115
WOHNFLÄCHE NETTO 71.2 m²
BALKON 8.6 m²